



## Message from the Chair

*Kia ora koutou*

*Welcome to the first NZNO Nursing Research Section (NRS) Te Wāhanga Rangahau Tapuhi newsletter for 2024. Ko Lorraine Ritchie ahau and I am the chair of the NRS, Te Wāhanga Rangahau Tapuhi committee for 2024. We have an almost brand-new committee which is very exciting, and we are looking forward to our first kanohi ki te kanohi hui together in early April.*

*We are pleased to represent you, the section members, and I hope you will contact us any time through email, Facebook, Instagram or Twitter. Your suggestions, ideas and feedback are always welcome.*

*We plan to share the latest nursing research with you, particularly Aotearoa research, along with articles, references and links to methodology guides, podcasts, webinars and all areas promoting and endorsing research in your lives and mahi.*

*The committee is dedicated, and our largest project at present is the planning of our Research Forum to be held on 10 October 2024 at Ko Awatea (Counties Manakau, Middlemore Hospital). The forum will include presentations from three keynote speakers and short presentations from emerging and established researchers, as well as presentations which focus on methodology. If you are interested in presenting and would like to submit an abstract, we will be calling for expressions of interest through our communication platforms soon.*

*We look forward to a year of exciting research which grounds us in the importance and value of nursing practice in Aotearoa and beyond.*

*Ngā mihi nui*

*Lorraine*

## 2024 Nursing Research Section, Te Wāhanga Rangahau Tapuhi Committee members

<b>Name</b>	<b>Role</b>	<b>Region</b>
Lorraine Ritchie	Acting Chair	Southern/ Te Tai Tonga
Ebony Komene	Treasurer	Northland/ Te Tai Tokerau
Hina Karim	Newsletter	Greater Auckland/ Tamaki Makaurau
Isaac Amankwaa	Committee Member	Greater Auckland/ Tamaki Makaurau
Kim Monteiro	Social media	Greater Auckland/ Tamaki Makaurau
Maria Tutahi	Te Runanga Rep	Waikato
Patricia McClunie-Trust	Special Projects	Midlands
Sandra Bayliss	Professional Nursing Advisor	Central

### **Mentoring and Support**

If you are passionate about any area of healthcare practice and want to make a research contribution to your field, a Master's or PhD could be the route for you. Doing a Master's and/ or PhD allows you to go deep into the critical enquiry of a chosen topic and enables exponential personal and professional growth.

Doctoral studies are challenging, but we provide you with support and encouragement every step of the way. Our team is open to offering you some coaching and mentoring to help you embark on your journey.

### *Come and find us on social media*



<http://www.facebook.com/nznursingresearch/>



[http://www.twitter.com/NursResearch\\_NZ](http://www.twitter.com/NursResearch_NZ)



[http://www.instagram.com/nursing\\_research\\_section/](http://www.instagram.com/nursing_research_section/)



<https://nz.linkedin.com/company/nznonrs>

# NRS, Te Wāhanga Rangahau Tapuhi Membership Survey Results December 2023

## Members Expectations

Advocacy for  
Nursing  
Research

Encouraging  
and  
advocating  
for nursing  
research to  
increase its  
prominence  
and  
importance  
within the  
nursing  
profession.

Support and  
Guidance

Providing  
ongoing  
support,  
guidance,  
and  
information  
to nurses  
involved in  
research  
activities,  
including  
facilitating  
access to  
resources  
and  
opportunities.

Networking  
and  
Mentoring

Emphasizing  
the  
importance  
of  
communication  
and  
networking  
among  
nurses  
engaged in  
research to  
share  
knowledge,  
experiences,  
and  
opportunities.

Research  
Development

Promoting  
continuous  
education and  
development in  
nursing  
research,  
including  
fostering  
interest and  
skills among  
members, and  
providing  
mentorship and  
educational  
sessions.  
Fostering a  
sense of  
community and  
collaboration  
among nurses  
involved in  
research  
activities,  
including  
through  
conferences,  
newsletters,  
and workshops

Transparency  
and  
Engagement

Promoting  
transparent  
communication,  
being  
open to  
suggestions,  
and  
acknowledging  
the  
limitations  
of volunteer  
efforts in  
supporting  
research.

Scholarships  
and  
Resourcing

Providing up-  
to-date  
information  
and resources  
relevant to  
nursing  
research,  
including  
updates on  
certifications  
and forms, as  
well as  
dissemination  
of research  
findings.  
Advocating for  
financial  
support for  
nursing  
research  
through  
scholarships  
and grants to  
encourage  
innovation and  
capacity-  
building within  
the profession.

Promotion of  
Nursing  
Research

Promoting  
research as  
an integral  
part of  
nursing  
practice,  
facilitating  
research  
opportunities,  
and  
showcasing  
nursing  
research  
achievements  
in New  
Zealand.

# Topics suggested for NRS Forum



## Nurse Practitioners

- Research focuses on assessing the impact of Nurse Practitioners on healthcare in New Zealand, including evaluating the value of their role and comparing their prescribing practices.



## Clinical Topics

- Exploration of healthcare topics such as lymphoedema, nurse-to-patient ratios, and palliative care.



## Research Methods

- Discussions on research methodologies and co-design research approaches.



## Kaupapa Māori and Indigenous Research

- Emphasis on indigenous, Māori, and Pacific research methodologies, equity strands, and Māori health issues.



## Professional Development

- Support for nurses in research, including mentoring, networking opportunities, and pathways for career advancement.



## Workshops

- Opportunities for workshops covering a range of research-related topics, from beginner researcher sessions to advanced methodology and ethics workshops.



## Collaboration and Networking

- Opportunities for collaboration and networking, both nationally and internationally, to facilitate research dissemination and project involvement.



## Evidence-Based Practice (EBP)

- Promotion of evidence-based practice in clinical settings and the synthesis of research evidence for application in healthcare.



## Ethical Consideration

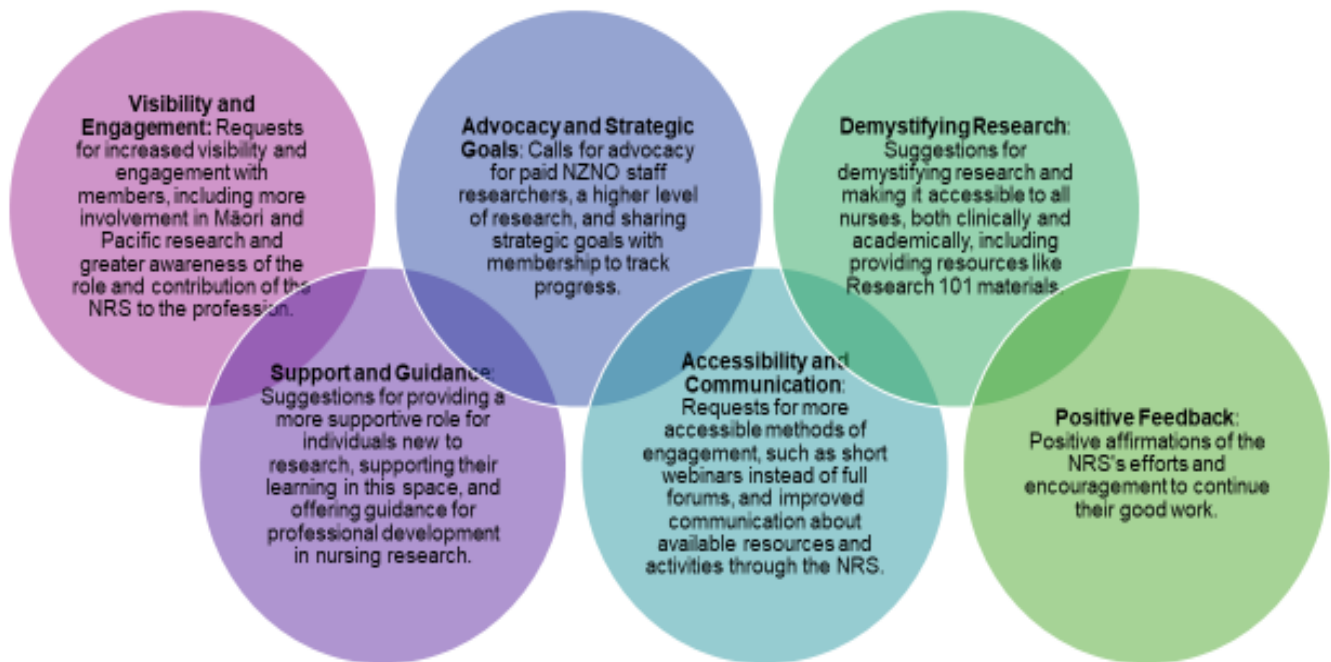
- Discussion on ethical issues in research, including Māori data sovereignty and ethical implications of research practices.



## Knowledge Dissemination

- Platforms for showcasing nursing research, including presentations, case studies, and publications, as well as resources for formatting and designing research outputs.

## Improvements that members want from the section



## National Nursing Student Survey 2023

The National Student Survey is an anonymous web-based survey of taura/ student nurses undertaken in May-June 2023. The survey was open to taura/students enrolled in the

- New Zealand Diploma in Enrolled Nursing
- Bachelor of Nursing
- Bachelor of Nursing Māori
- Bachelor of Health Science Māori
- Bachelor of Nursing Pacific, and
- Direct Entry Masters (Graduate Entry Masters) programmes leading to registration as a nurse in New Zealand, Aotearoa.

This was the 10th biennial national student survey; the previous survey was in 2021 and attracted 685 respondents. This survey had 1,406 eligible responses, and all 20 schools of nursing were represented. The focus of the current survey was to investigate:

- Student finances
- LGBTQIA+ community needs
- Challenges for Māori and Pacific taura and
- Students' mental wellbeing.

At the time of the survey there were approximately 3,200 taura/ student members of NZNO.

## Significant findings

- Financial concerns were a predominant theme across all programmes impacting on physical and mental wellbeing, with clinical experience being identified as a particular financial pressure point. The cost associated with
  - Petrol
  - parking
  - travel and
  - accommodation.

Additional food costs during clinical experience was cited by respondents as contributing to financial hardship.

- 84% of respondents stated they felt nursing students should be provided with some form of financial compensation during clinical experience.
- 86% of respondents indicated they had felt either moderately or excessively stressed during their studies, and in addition to financial concerns, stressors such as
  - assessments being due at the same time
  - assessment due dates occurring during clinical experience and
  - course costs also featured highly.
- The need for appropriate cultural support & pastoral care was also cited as being integral to the students feeling safe and understood in both theory and clinical environments, with Māori and Pacific taura often facing unique practical as well as cultural barriers, including travel, whānau obligations and language difficulties.
- 33% of respondents had been impacted by extreme weather events, with flooding, road closures, and the cancelling of clinical placement days cited.
- Concerningly, over 30% of respondents indicated that they had questioned whether nursing was right for them.

Three main themes emerged from the data:  
*Support, Safety and Inequity.*

Themes	Codes
Support	Financial support <ul style="list-style-type: none"> <li>• paid clinical placements</li> <li>• support with fees</li> <li>• financial guidance</li> <li>• travel costs – fuel, parking</li> </ul>
	Cultural support <ul style="list-style-type: none"> <li>• cultural supervision</li> <li>• access to kaumatua and kuia</li> <li>• access to experienced RNs</li> <li>• study groups</li> <li>• Māori led program for Māori</li> <li>• dedicated space</li> <li>• funding for cultural support</li> </ul>
	Personal support <ul style="list-style-type: none"> <li>• health services</li> <li>• mental health support</li> <li>• help for ESOL students</li> <li>• culturally appropriate support</li> <li>• support to voice concerns</li> <li>• Childcare</li> </ul>
	Learning support <ul style="list-style-type: none"> <li>• campus closures post cyclone</li> <li>• online</li> </ul>
Safety	Safety on Placements <ul style="list-style-type: none"> <li>• cultural safety</li> <li>• physical safety</li> <li>• safety from bullying</li> </ul>
Inequity	<ul style="list-style-type: none"> <li>• disadvantage</li> <li>• training model and recruitment</li> <li>• cultural safety training</li> <li>• focus on indigenous health</li> </ul>



## Research Publications

A few recent publications from our members who are active researchers;

Adams, S., **Komene, E.**, Wensley, C., Davis, J., & Carryer, J. (2024). Integrating nurse practitioners into primary healthcare to advance health equity through a social justice lens: An integrative review. *Journal of Advanced Nursing*.

<https://doi.org/10.1111/jan.16093>

**Hina Nizar Karim**, Groom, P., & Tiu, M. (2023). Intensive care unit staff perceptions of redeployment to other clinical areas: A mixed method Approach. *SAGE Open Nursing*, 9.

<https://doi.org/10.1177/23779608231196401>

Jones, V., **McClunie-Trust, P.**, Macdiarmid, R., Turner, R., Shannon, K., Winnington, R., ... & Jarden, R. (2024). Education pathways for graduate entry registered nurses to transition to advanced practice roles: A realist review. *Nurse Education Today*, 106032.

[Education pathways for graduate entry registered nurses to transition to advanced practice roles: A realist review](#)

**Komene, E.**, Sami, L., Wiapo, C., Davis, J., & Adams, S. (2023). Whakarōpū: An exemplar fostering professional development and cultural growth with a collective grouping of Māori, and Pacific Nurses. *Nursing Praxis in Aotearoa New Zealand*, 39(2). <https://doi.org/10.36951/001c.90845>

**Komene, E.**, Gerrard, D., Pene, B., Parr, J., Aspinall, C., & Wilson, D. (2023). A tohu (sign) to open our eyes to the realities of Indigenous Māori registered nurses: A qualitative study. *Journal of Advanced Nursing*.

<https://doi.org/10.1111/jan.15609>

**Komene, E.**, Pene, B., Gérard, D., Parr, J., Aspinall, C., & Wilson, D. (2023). Whakawhanaungatanga—Building trust and connections: A qualitative study indigenous Māori patients and whānau (extended family network) hospital experiences. *Journal of Advanced Nursing*. <https://doi.org/10.1111/jan.15912>

**McClunie-Trust, P.**, Jarden, R., Marriott, P., Winnington, R., Dewar, J., Shannon, K., ... & Macdiarmid, R. (2024). Graduate entry nursing students' development of professional nursing self: A scoping review. *International Journal of Nursing Studies*, 104670.

Shannon, K., **McClunie-Trust, P.**, Macdiarmid, R., Jarden, R., Dewar, J., Turner, R., ... & Jones, V. (2024). Graduate entry nursing students' well-being and transformation in becoming registered nurses: Phase three of a longitudinal case study. *Collegian*.

[Graduate entry nursing students' well-being and transformation in becoming registered nurses: Phase three of a longitudinal case study](#)

Wiapo, C., Sami, L., **Komene, E.**, Wilkinson, S., Davis, J., Cooper, B., & Adams, S. (2023). From Kaimahi to Enrolled Nurse: A Successful Workforce Initiative to Increase Māori Nurses in Primary Health Care. *Nursing Praxis in Aotearoa New Zealand*, 39(1). <https://doi.org/10.36951/001c.74476>

Nursing Research Section, Te Wāhanga Rangahau  
Tapuhi, NZNO Committee Meeting

**Venue:** NZNO National Office, Wellington

**Date:** Wed-Thurs, 3-4 April 2024

**Time:** 0800-1600 hrs

UPCOMING EVENTS

Research Forum

**Venue:** Ko Awatea, 54/100 Hospital Road, Middlemore Hospital

**Date:** Thurs, 10 October 2024

**Time:** 0800hrs

Registration required.

For other conferences that may be of interest, please check the [NZNO event calendar](#).

Not a member? Join us, its free...just scan the QR code.

